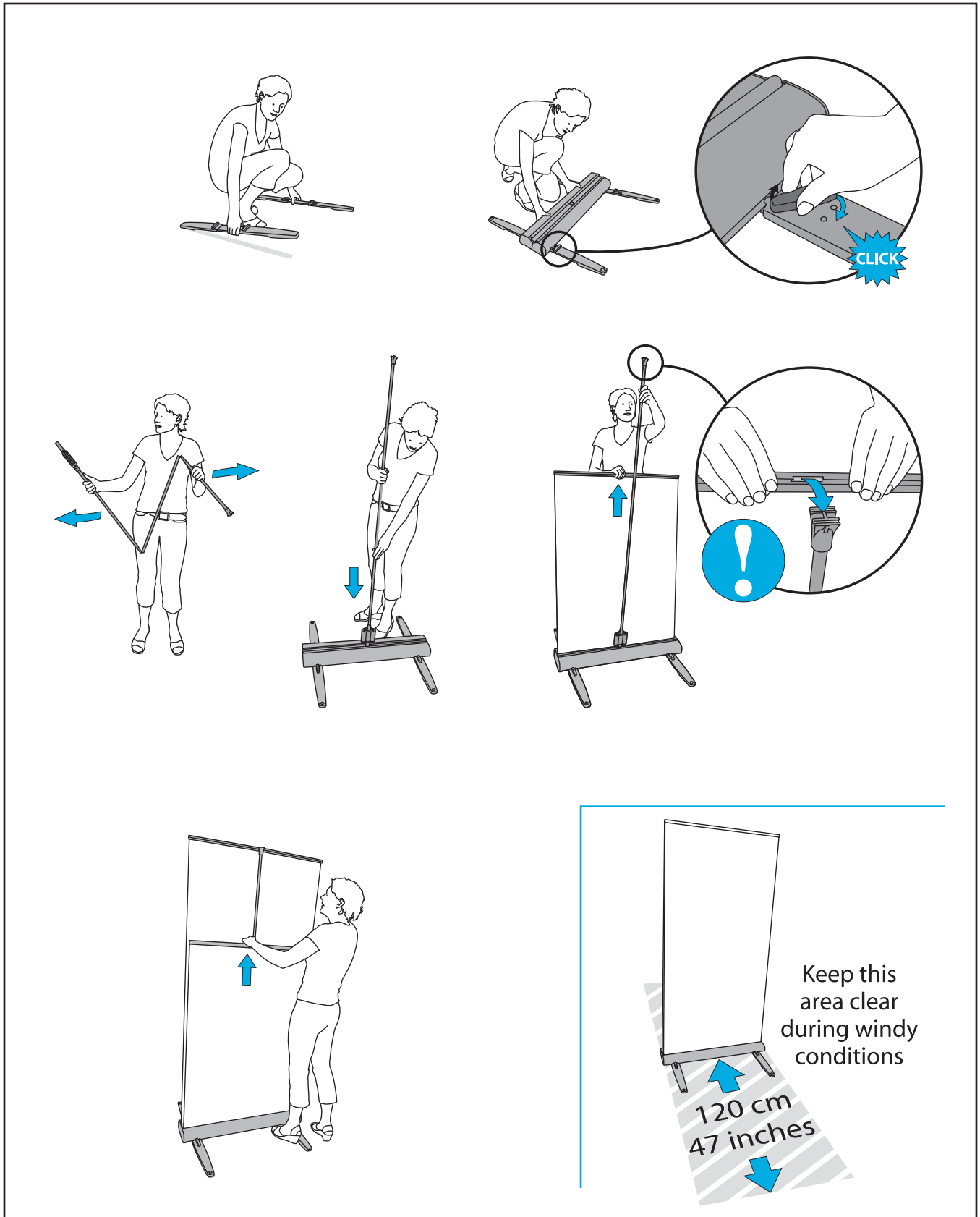
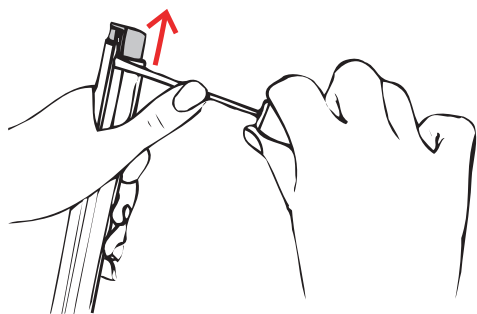


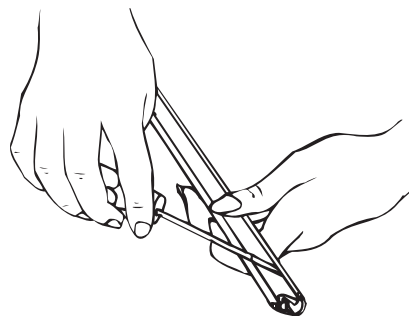
# Expand MediaScreen 2 Outdoor Set-up Instruction



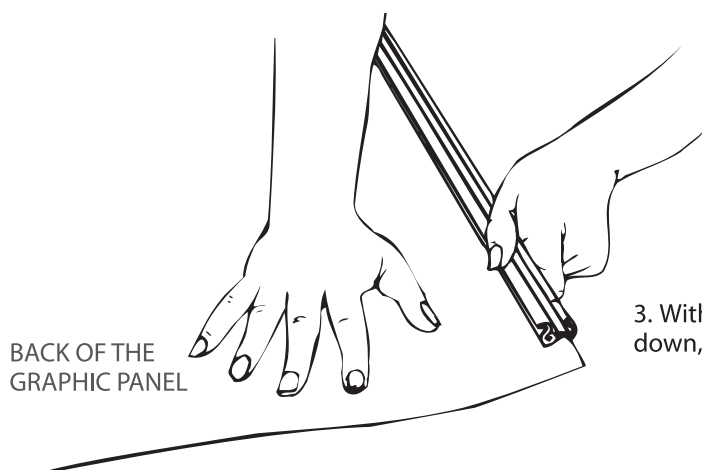
# How to handle the Expand MediaScreen 2 outdoor profiles



1. Use a flat blade screwdriver (or similar tool) to remove the plastic profile-lock from each end of the profile.

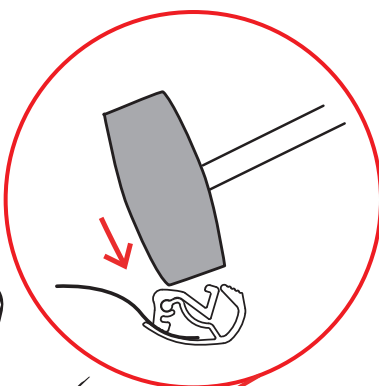


2. Use a flat blade screwdriver (or similar tool) to open the profile.

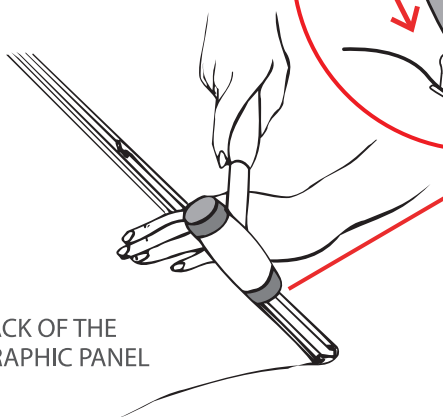


3. With the front of the graphic panel facing down, slide the profile onto the graphic.

4. Close the profile by using a rubber mallet or hammer.

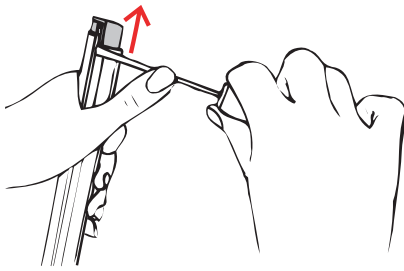


BACK OF THE GRAPHIC PANEL

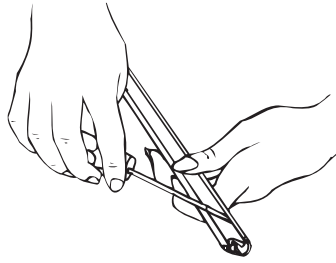


5. Press the plastic profile-lock into each end of the profile.

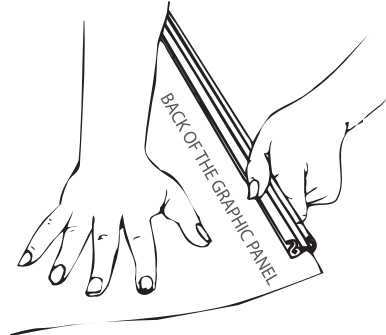
# Graphic Installation Expand MediaScreen 2 outdoor



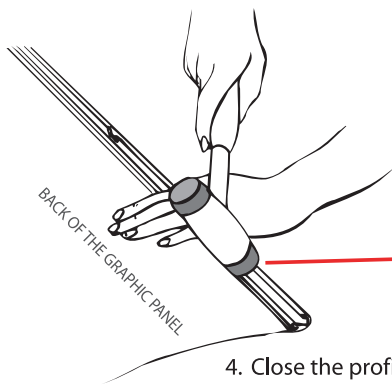
1. Use a flat blade screwdriver (or similar tool) to remove the plastic profile-lock from each end of the profile.



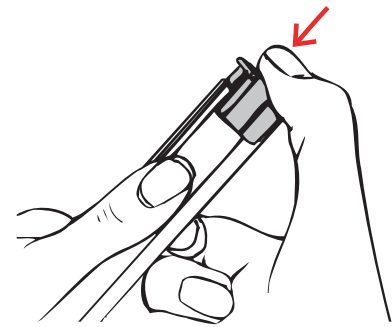
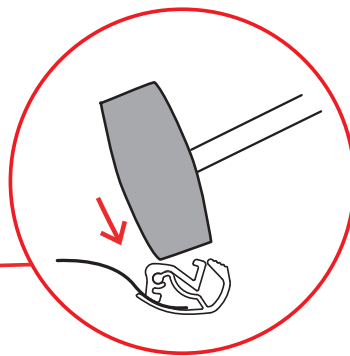
2. Use a flat blade screwdriver (or similar tool) to open the profile.



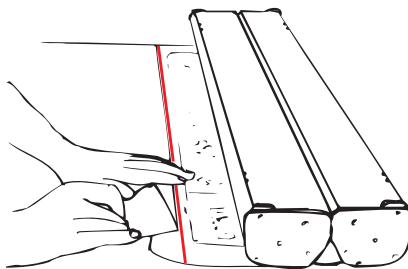
3. With the front of the graphic panel facing down, slide the profile onto the graphic.



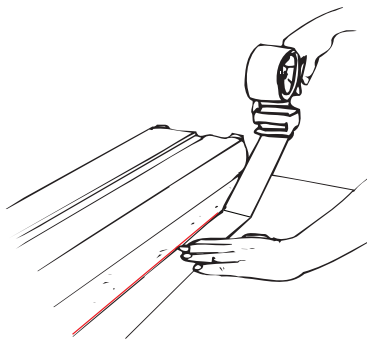
4. Close the profile by using a rubber mallet or hammer.



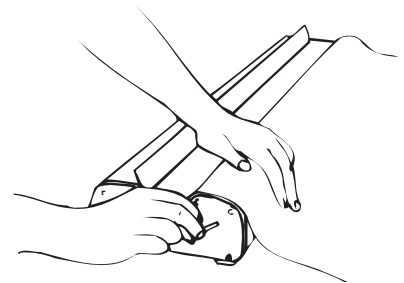
5. Press the plastic profile-lock into each end of the profile.



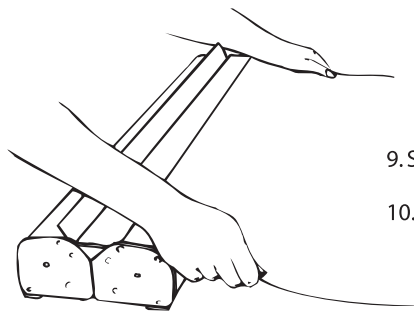
6. Remove the protective strip. Apply the graphic with picture side upwards and position along the red line.



7. Apply packing tape over the joint!



8. Grip the graphic and the base with your left hand. Remove the locking pin with your right hand. The mechanism is now activated!



9. Slowly and carefully allow the graphic to retract into the unit.

10. Repeat these steps for applying the second graphic panel