

# Advance

## ADV-800-S

With refined styling and a streamlined profile, the Advance is packed with new design innovations. Useable as a single or double sided system, this removable cassette banner system has been specially designed for maximum convenience and ease of use.




We are continually improving and modifying our product range and reserve the right to vary the specifications without prior notice. All dimensions and weights quoted are approximate and we accept no responsibility for variance. E&OE. See Graphic Templates for graphic bleed specifications.

## features and benefits:

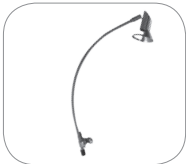
- Variable height = 29.5" - 83.35"
- **New** telescopic pole
- **New** integrated pole storage for the twist & lock telescopic pole
- **New** and improved accessory channel featured on the top of the unit (for literature pocket)
- Single or double sided
- Graphic tensioner
- Interchangeable graphic cassettes
- Add your own branding using the slide in graphic channel along the banner stand base
- Premium form molded EVA bag included
- Lifetime warranty against manufacturer defects

## dimensions:

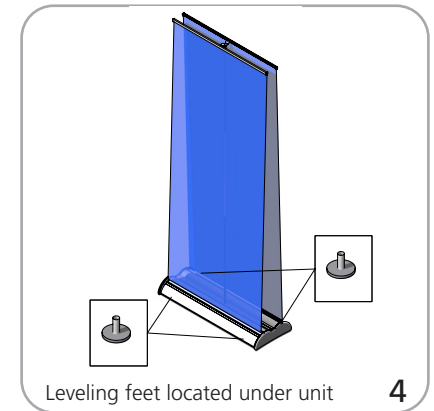
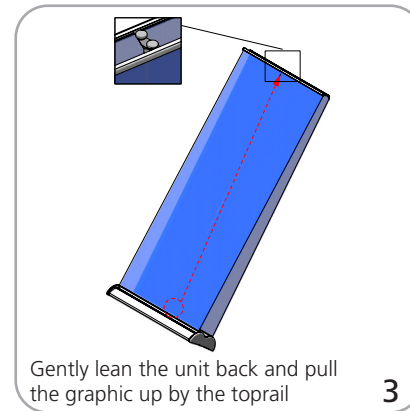
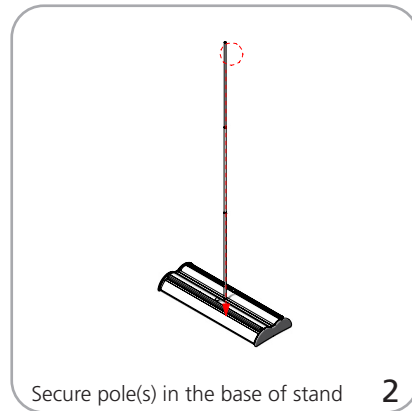
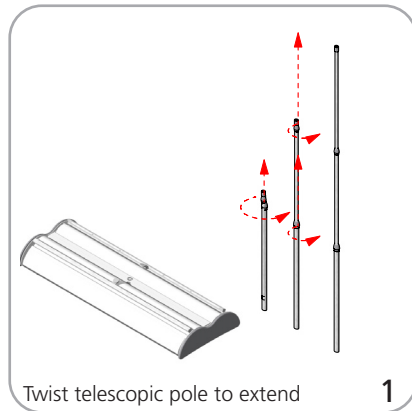
Hardware	Graphic
<b>Assembled unit:</b> 87"(h) max x 34.25"(w) x 11.61"(d) approx. 2210mm(h) x 870mm(w) x 295mm(d) approx.	<b>Visible dimensions:</b> 83.35"max(h) x 31.50"(w) 2130mm(h) x 800mm(w)
<b>Base dimensions:</b> 3.75"(h) x 34.25"(w) x 11.61"(d) approx. 95mm(h) x 870mm(w) x 295mm(d) approx.	29.92" min(h) x 31.50"(w) 760mm(h) x 800mm(w)
<b>Weight:</b> 16.8lbs/7.66kg approx. (including carry bag) (Installed graphics will add weight)	Grippa top rail attachment recommended for semi-permanent or long term use. Adhesive top rail attachment recommended for short term use.
<b>Shipping</b>	<b>WARNING:</b> Always attach graphic to base and top rail before removing the locking pin. After fitting, the graphic should be left for 24 hours before use to ensure the adhesive bonds sufficiently. Opening the base will invalidate the product warranty.
<b>Shipping dimensions - ships in one box</b> 37"(h) x 14"(w) x 5"(d) 920mm(h) x 350mm(w) x 115mm(d)	Graphic tension may be re-applied or added by turning the ratchet tensioner clockwise.
<b>Approximate shipping weight:</b> 24lbs/10.89kg shipping weight with graphic approx.	
17lbs/7.66kg shipping weight without graphic approx.	

## additional information:

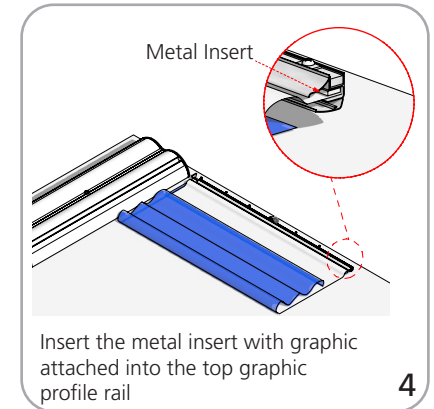
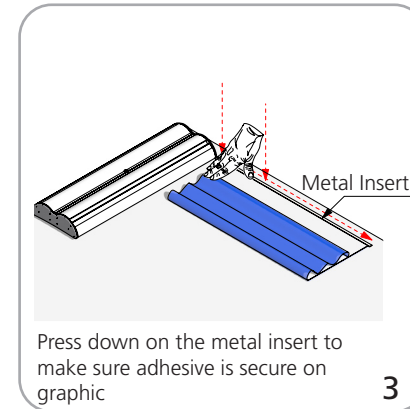
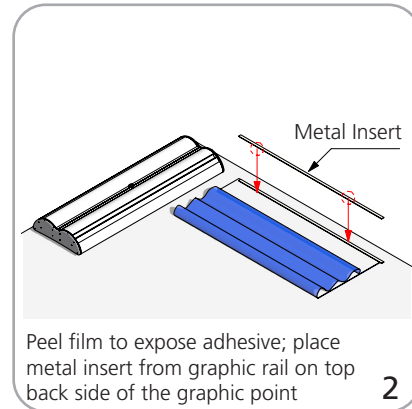
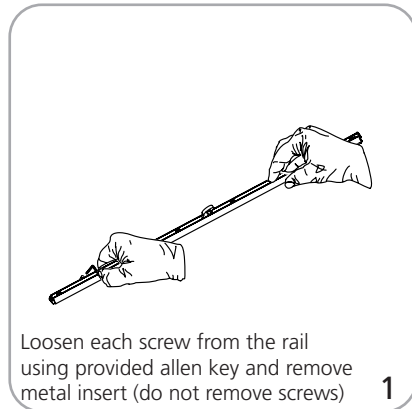
Lumina 2 banner lighting option available



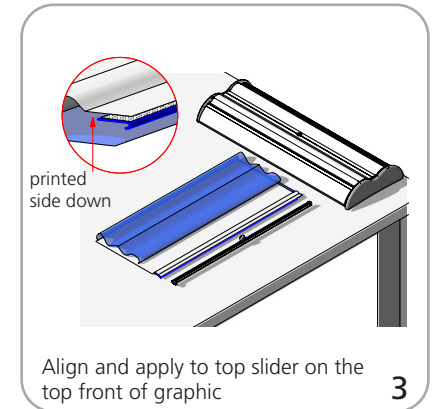
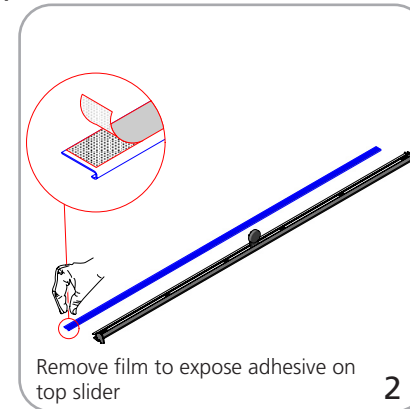
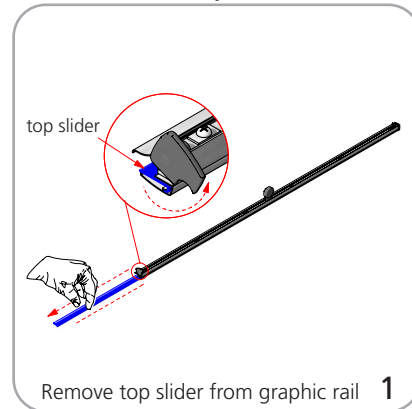
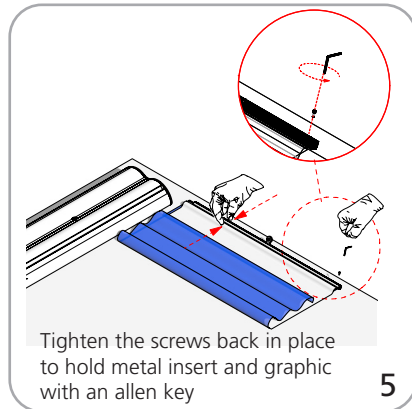
## Set-up



## Graphic to top rail attachment (metal insert)



## Quick slide top rail attachment (plastic insert)



## Graphic to base attachment

